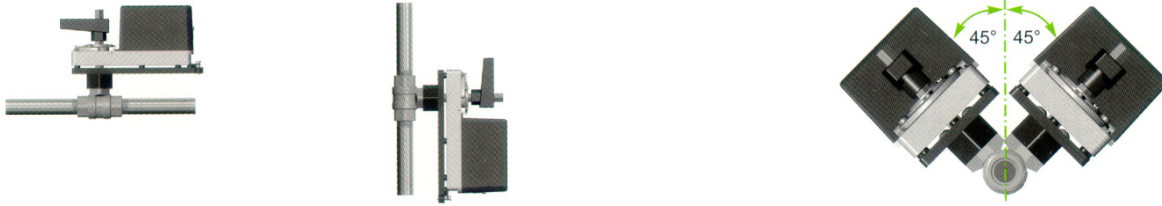




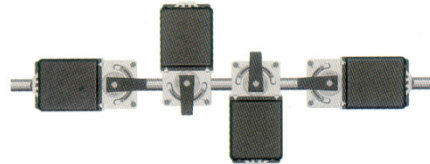
**Neptronic Actuator Installation on a Ball Valve (2 Way and 3 Way)**

Install the actuator either horizontally or vertically.

Do not install the actuator at an angle of more than 45° vertical from the pipe's axis.



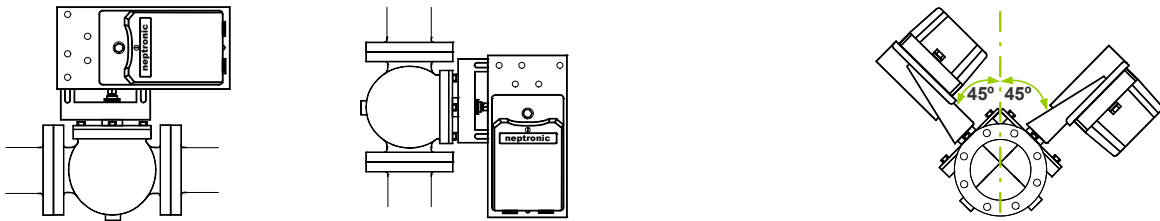
Griswold® valves offer more flexibility. Install the actuator mounting plate at any rotation angle to the valve body.



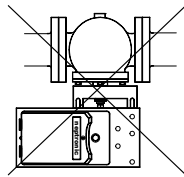
**Neptronic Actuator Installation on a Globe Valve (2 Way and 3 Way)**

Install the actuator either horizontally or vertically.

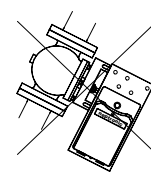
Do not install the actuator at an angle of more than 45° vertical from the pipe's axis.



**Incorrect Installation**



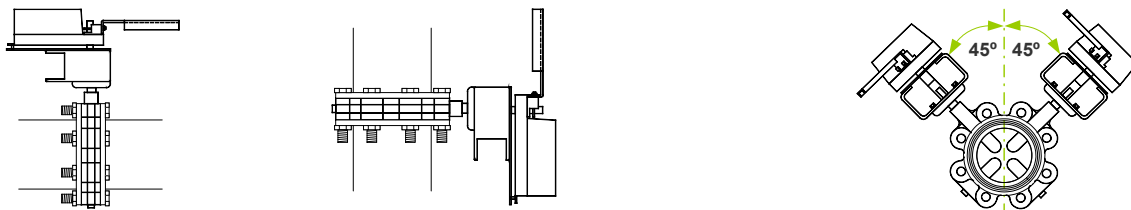
**Incorrect Installation**



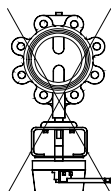
**Neptronic Actuator Installation on a Butterfly Valve (2 Way and 3 Way)**

Install the actuator either horizontally or vertically.

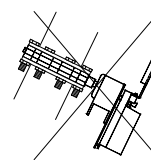
Do not install the actuator at an angle of more than 45° vertical from the pipe's axis.



**Incorrect Installation**



**Incorrect Installation**

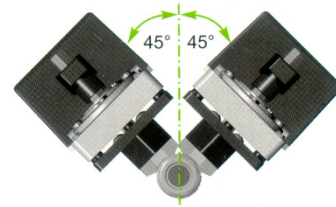
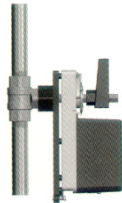
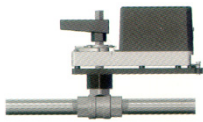


*Note: Always respect the valve manufacturer's recommendations for the installation of any actuated valve on the system.*

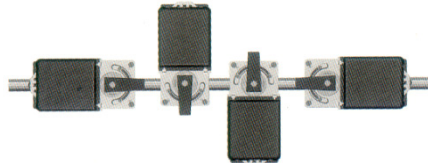
### Servomoteur Neptronic monté sur vannes à bille (2 voies et 3 voies)

Le servomoteur peut être placé horizontalement ou verticalement.

Ne pas dépasser 45° par rapport à l'axe vertical en cas d'inclinaison.



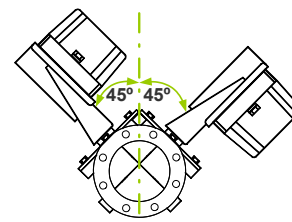
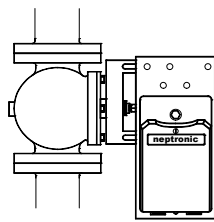
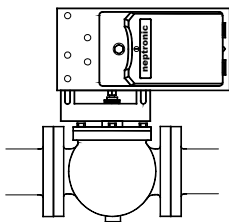
Les vannes à bille Griswold® permettent une plus grande flexibilité dans l'orientation du servomoteur par rapport à la vanne.



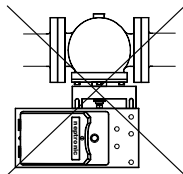
### Servomoteur Neptronic monté sur vannes globe (2 voies et 3 voies)

Le servomoteur peut être placé horizontalement ou verticalement.

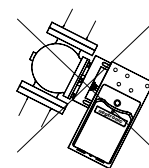
Ne pas dépasser 45° par rapport à l'axe vertical en cas d'inclinaison.



**Installation Incorrecte**



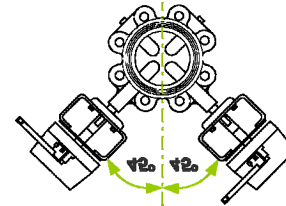
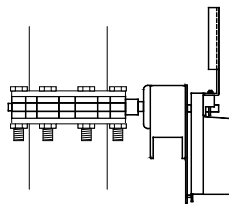
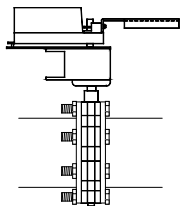
**Installation Incorrecte**



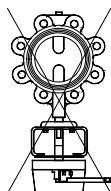
### Servomoteur Neptronic monté sur vannes papillon (2 voies et 3 voies)

Le servomoteur peut être placé horizontalement ou verticalement.

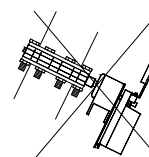
Ne pas dépasser 45° par rapport à l'axe vertical en cas d'inclinaison.



**Installation Incorrecte**



**Installation Incorrecte**



**Remarque:** Dans tous les cas, respecter les recommandations du fabricant de la vanne pour le montage de l'ensemble sur le système.