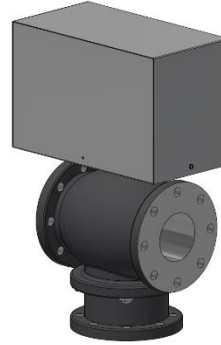


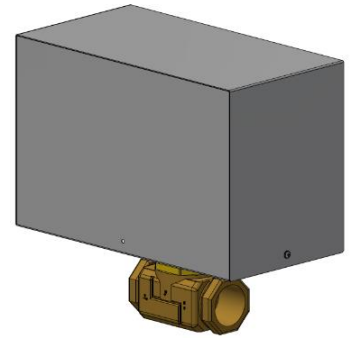


Description

Rain Hood (RH) protects actuators installed on valves against rain in outdoor installations.

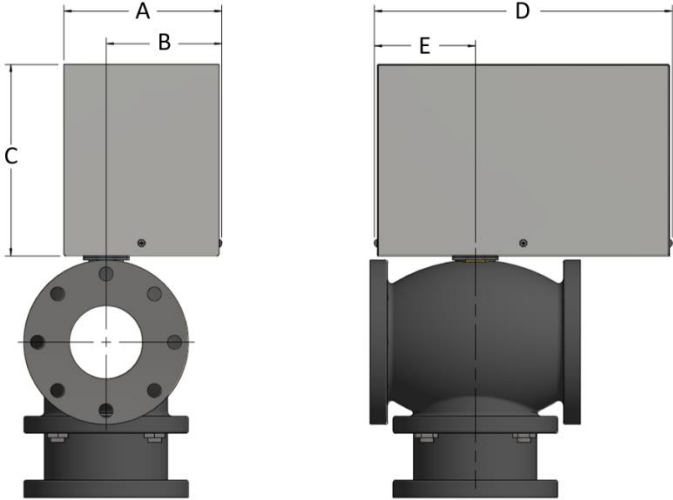


RH15 on Flanged Globe Valve



RH15 on NPT Globe Valve

Technical Specifications

Description	RH15
Actuator Compatibility	All Neptronic L, T and R series actuators installed on Siebe globe valves (Maxi Bonnet) NPT Female valve (1" to 2") → 2-way & 3-way (High Close-Off) Flanged valve (2.5" to 4") → 2-way & 3-way
Material	304 stainless steel
Access	Removable top panel
Ingress Protection	IP 54 equivalent to NEMA Type 3
Dimensions A = 8.65" 220 mm B = 6.34" 161 mm C = 10.50" 267 mm D = 16.31" 414 mm E = 5.53" 141 mm	



CAUTION: Rain Hood does not protect the actuators in corrosive and saline environments.



Assembly Instructions

The RH15 can be mounted horizontally.

1. Remove the 3 sets of screws from the Rain hood and set them aside (see screw locations below).
2. Slide the rain hood cover off, set this aside, and connect the actuator cables.
3. If a BX connector is necessary, ensure to install it through the appropriate hole (see hole location below).
4. Ensure that that everything is properly attached and place the cover back onto the actuator and valve assembly.
5. Using the 3x screws set aside in step 1, secure the cover in place.

